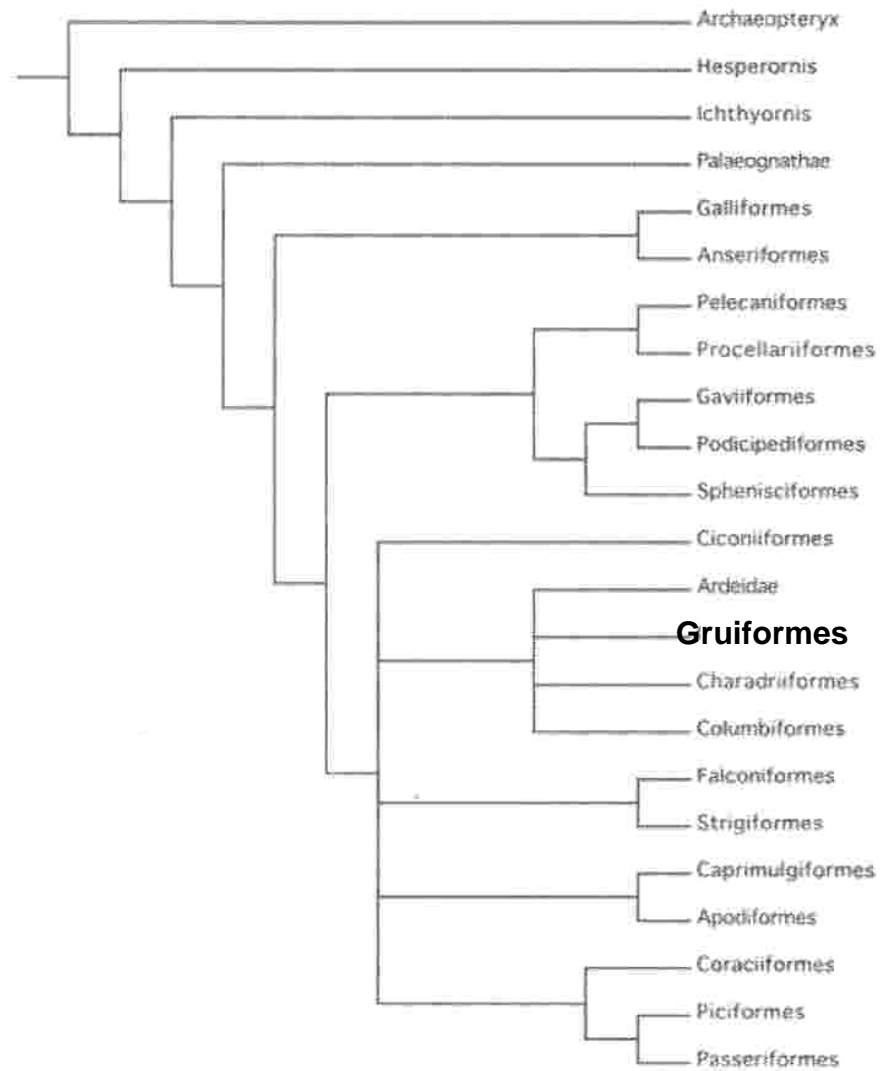
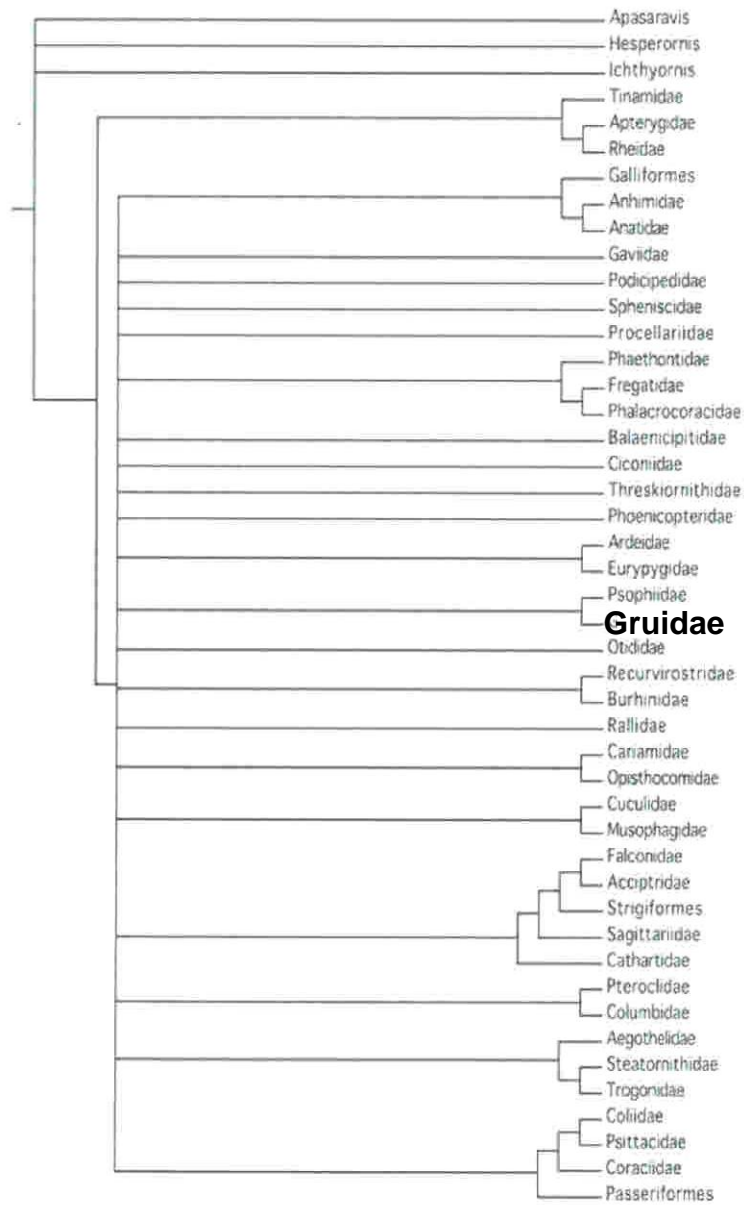


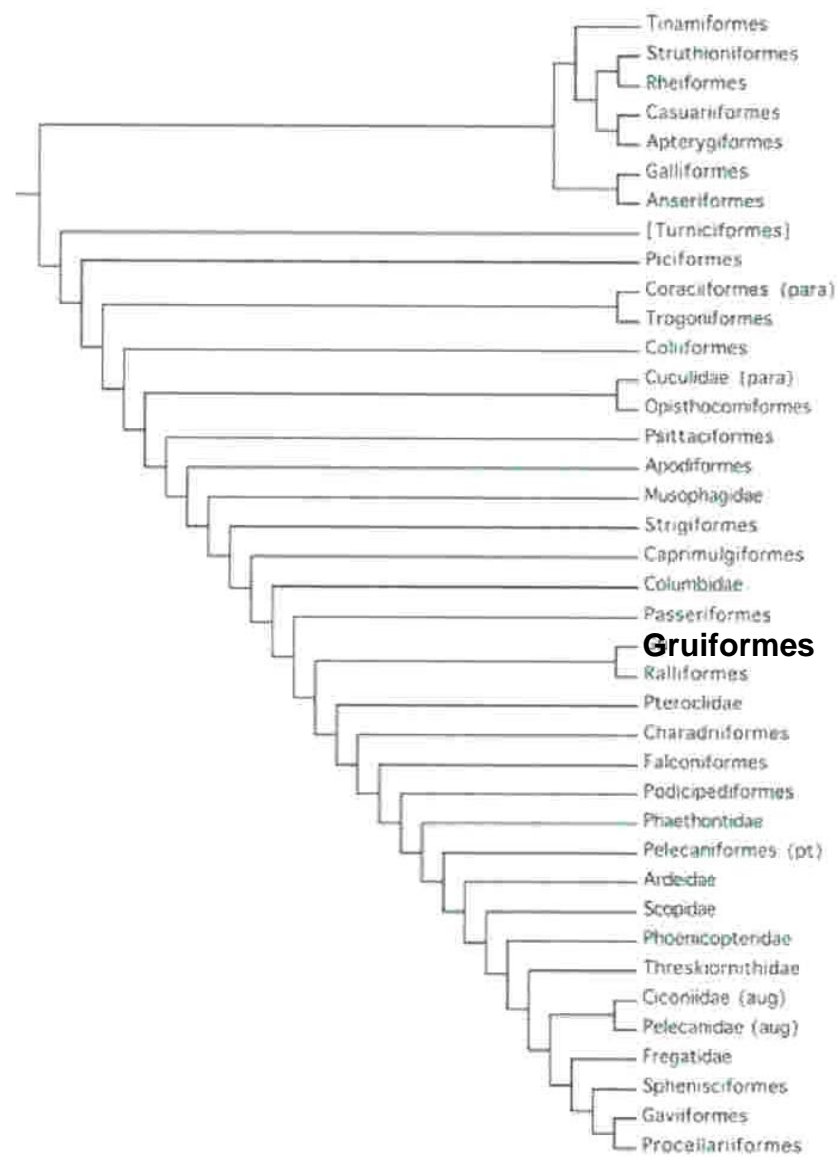
К. А. Юдин (1965)



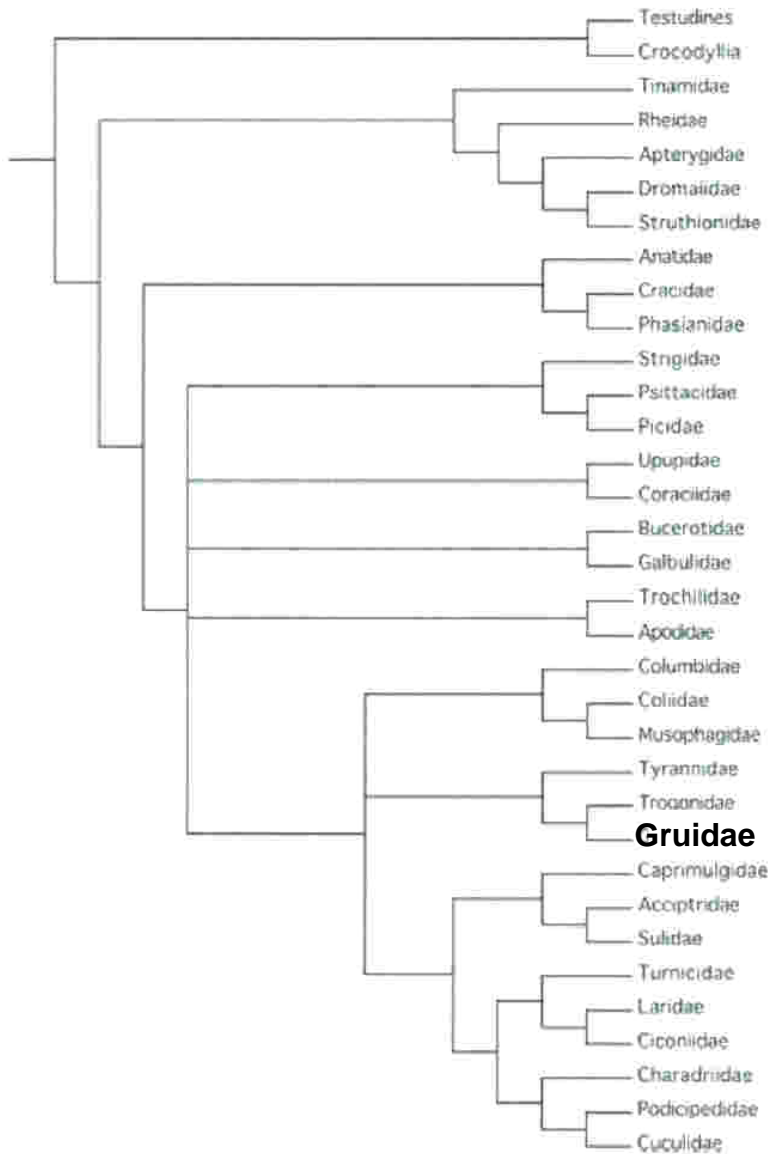
Cracraft (1988)



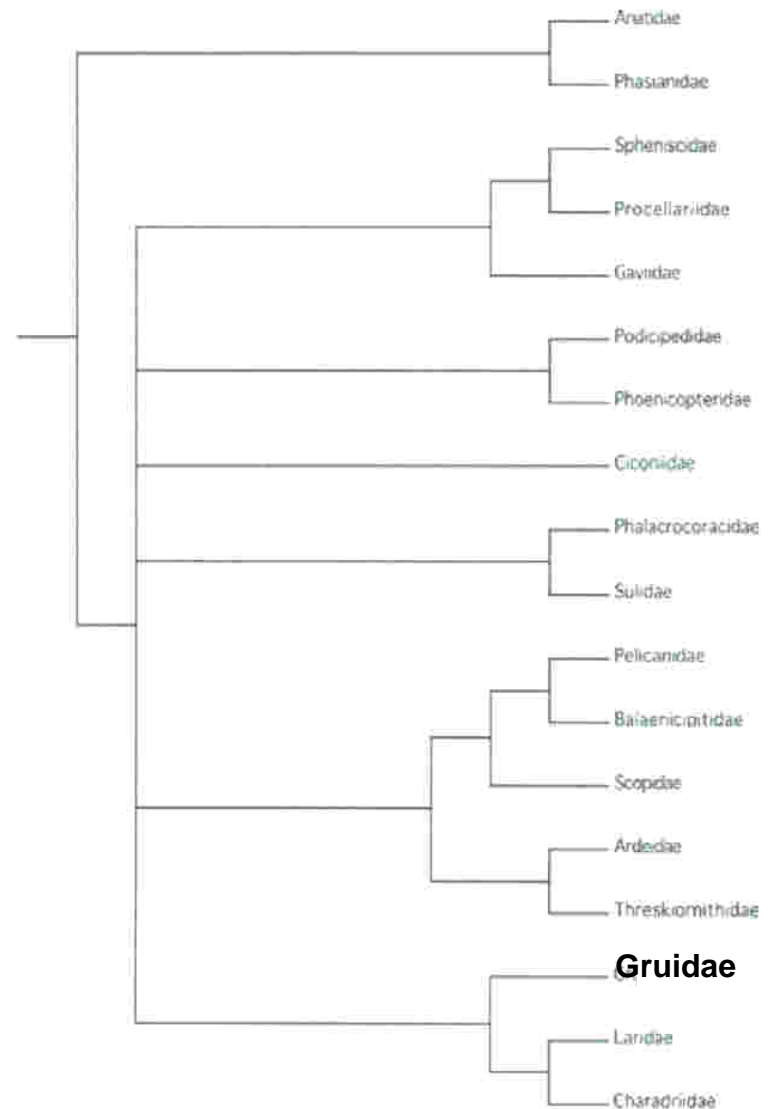
Mayr & Clarke (2003)



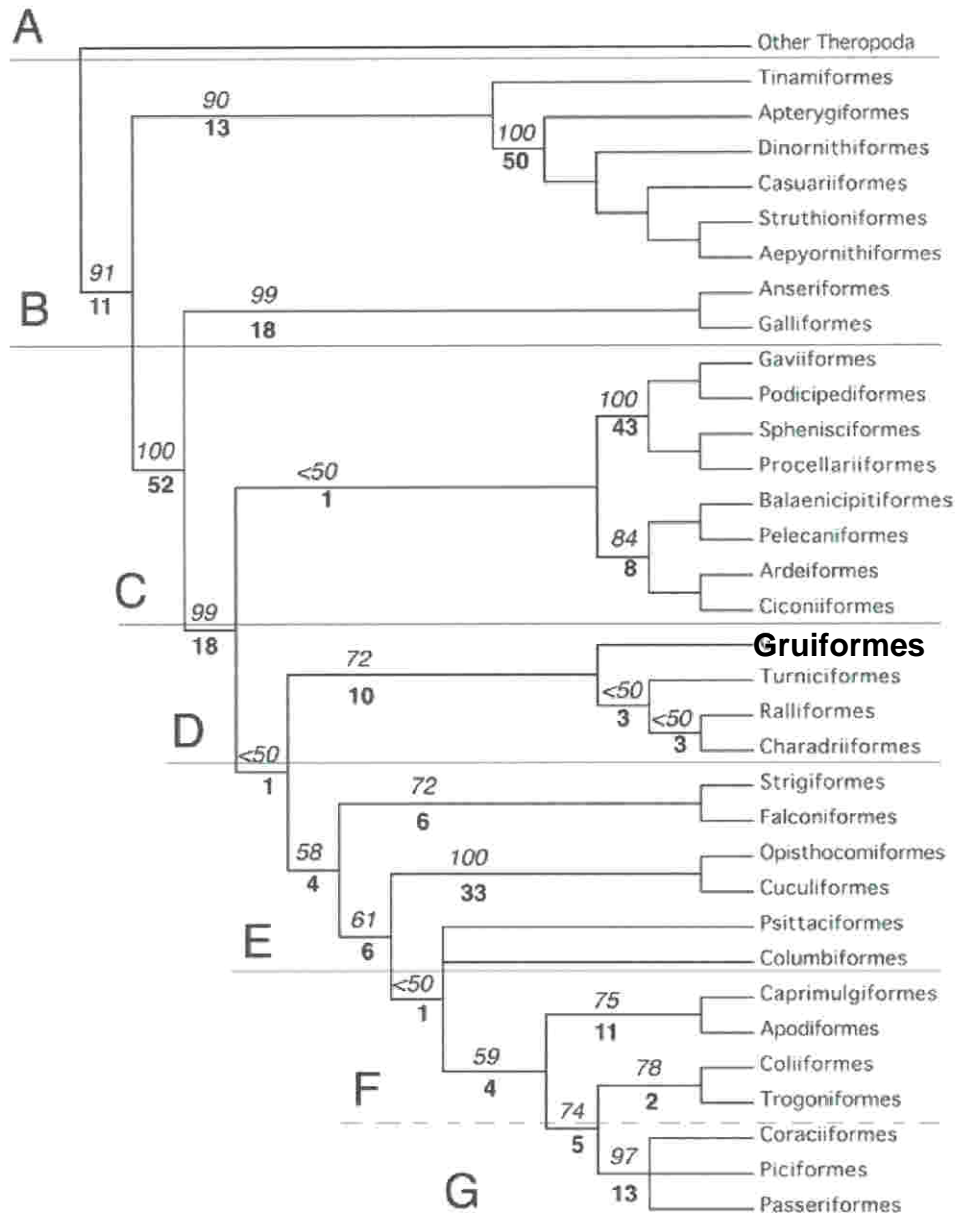
Sibley & Ahlquist (1990)

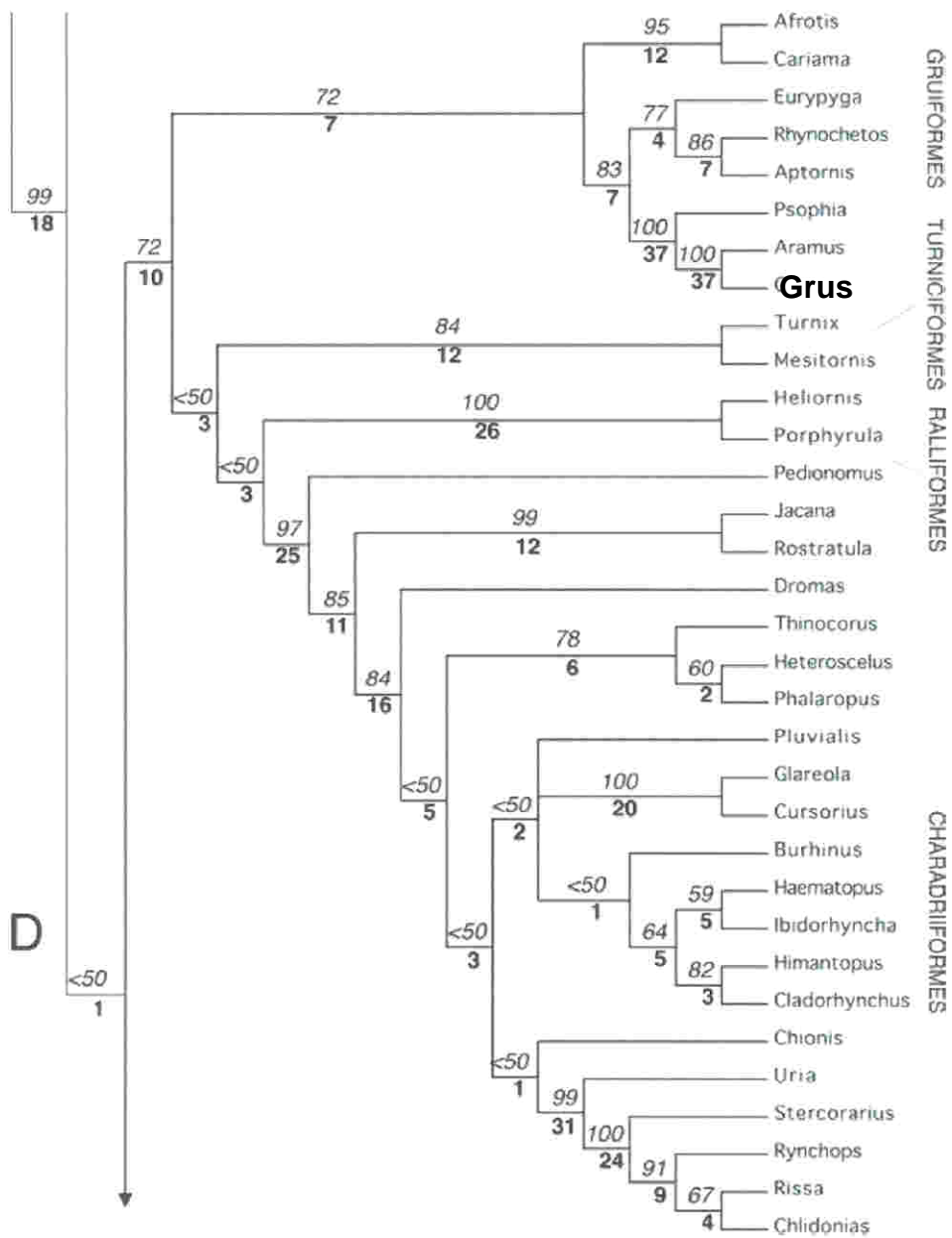


Van Tuinen et al (2000)

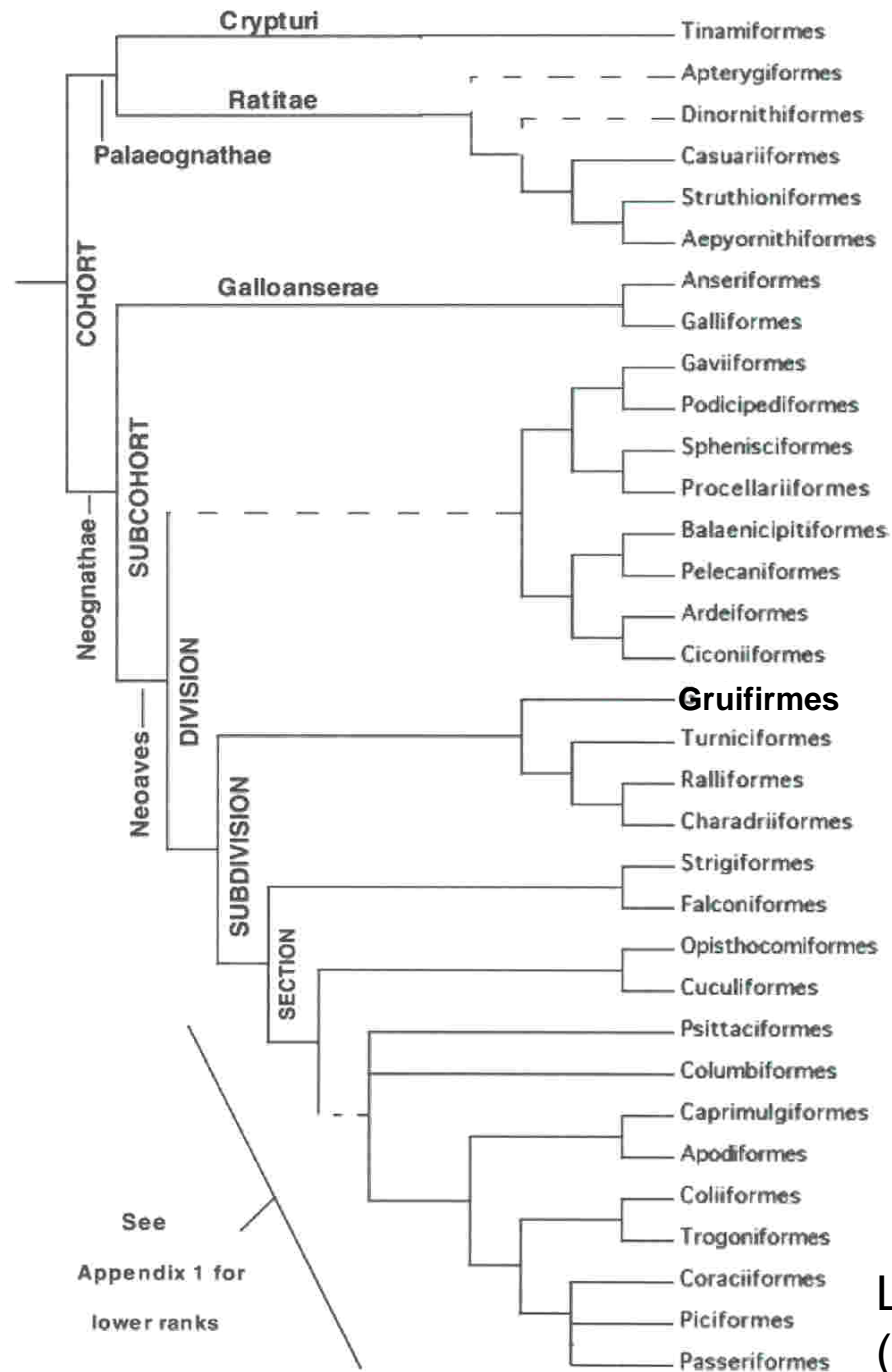


Van Tuinen et al (2001)





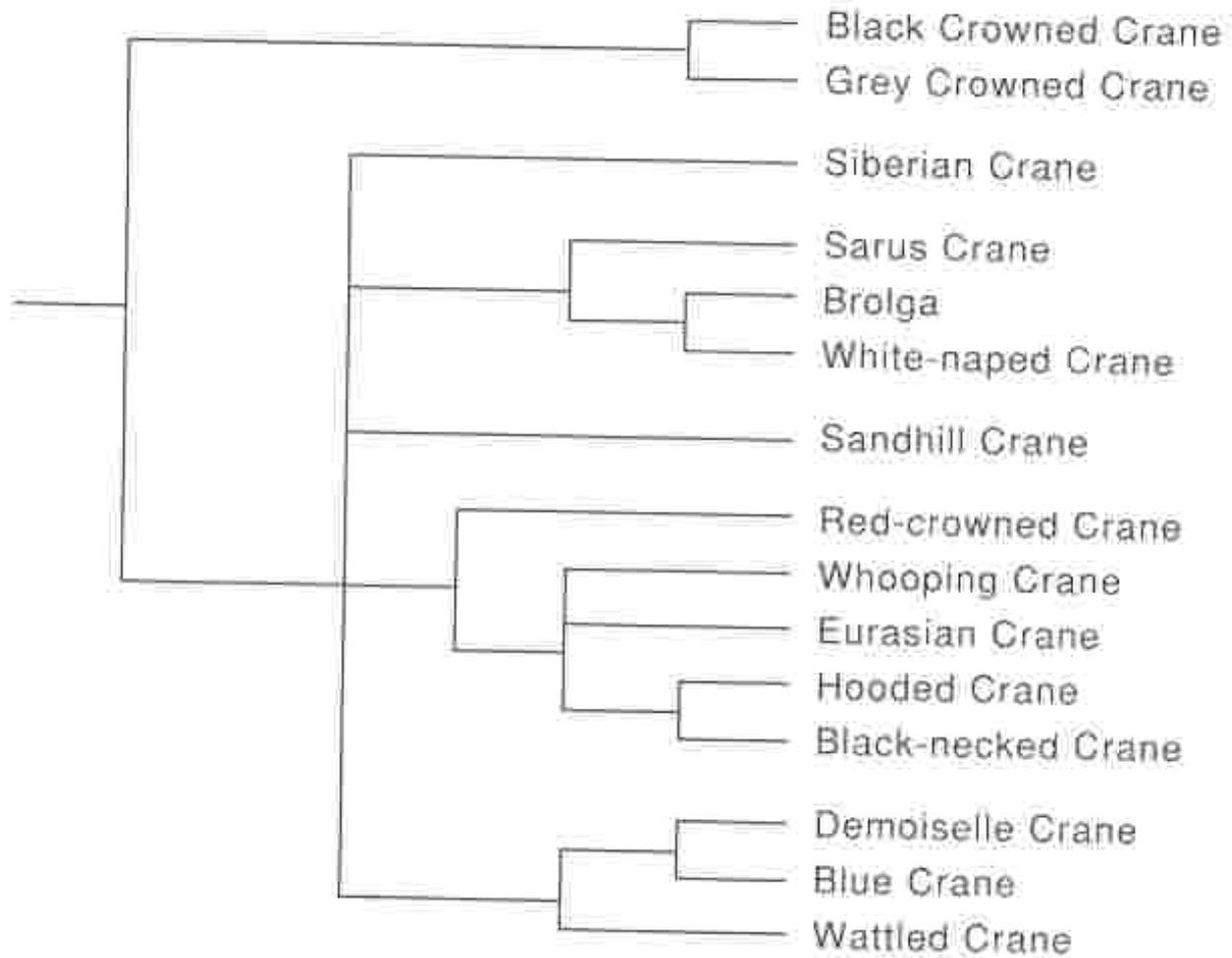
Subclass Avialae
 Infraclass Aves
 Parvclass Palaeoaves
 Parvclass Ornithurae
 Parvclass Eoaves
 Parvclass Noernithes
 Cohort Palaeognathae
 Cohort Neognathae



See
 Appendix 1 for
 lower ranks

Livezey & Zusi
 (2007)

DNA Phylogeny of Cranes



Krajewski & Fetzner (1994)

BALEARICINAE

BALEARICA Brisson, 1760 F

○ *Balearica regulorum* GREY CROWNED CRANE

— *B. r. gibbericeps* Reichenow, 1892¹

— *B. r. regulorum* (E.T. Bennett, 1834)

○ *Balearica pavonina* BLACK CROWNED CRANE

— *B. p. pavonina* (Linnaeus, 1758)

— *B. p. ceciliae* Mitchell, 1904

GRUINAE

ANTHROPOIDES Vieillot, 1816 M

○ *Anthropoides virgo* (Linnaeus, 1758) DEMOISELLE CRANE

○ *Anthropoides paradiseus* (A.A.H. Lichtenstein, 1793) BLUE CRANE²

BUGERANUS Gloger, 1842 M

○ *Bugeranus carunculatus* (J.F. Gmelin, 1789) WATTLED CRANE

GRUS Pallas, 1766 F

○ *Grus leucogeranus* Pallas, 1773 SIBERIAN CRANE

○ *Grus canadensis* SANDHILL CRANE

— *G. c. canadensis* (Linnaeus, 1758)

— *G. c. rowani* Walkinshaw, 1965

— *G. c. tabida* (J.L. Peters, 1925)

— *G. c. pratensis* F.A.A. Meyer, 1794

— *G. c. pulla* Aldrich, 1972

— *G. c. nesiotis* Bangs & Zappey, 1905

○ *Grus antigone* SARUS CRANE

— *G. a. antigone* (Linnaeus, 1758)

— *G. a. sharpii* Blanford, 1895³

— *G. a. gillae* Schodde, Blackman & Haffenden, 1989⁴

○ *Grus rubicunda* (Petty, 1810) BROLGA

○ *Grus vipio* Pallas, 1811 WHITE-NEPED CRANE

○ *Grus grus* COMMON CRANE

— *G. g. grus* (Linnaeus, 1758)

— *G. g. tilfordi* Sharpe, 1894

○ *Grus monacha* Temminck, 1835 HOODED CRANE

○ *Grus americana* (Linnaeus, 1758) WHOOPING CRANE

○ *Grus nigricollis* Przevalski, 1876 BLACK-NECKED CRANE

○ *Grus japonensis* (Statius Müller, 1776) RED-CROWNED CRANE

Dickenson (2004)

Eurasian Crane

Grus grus

